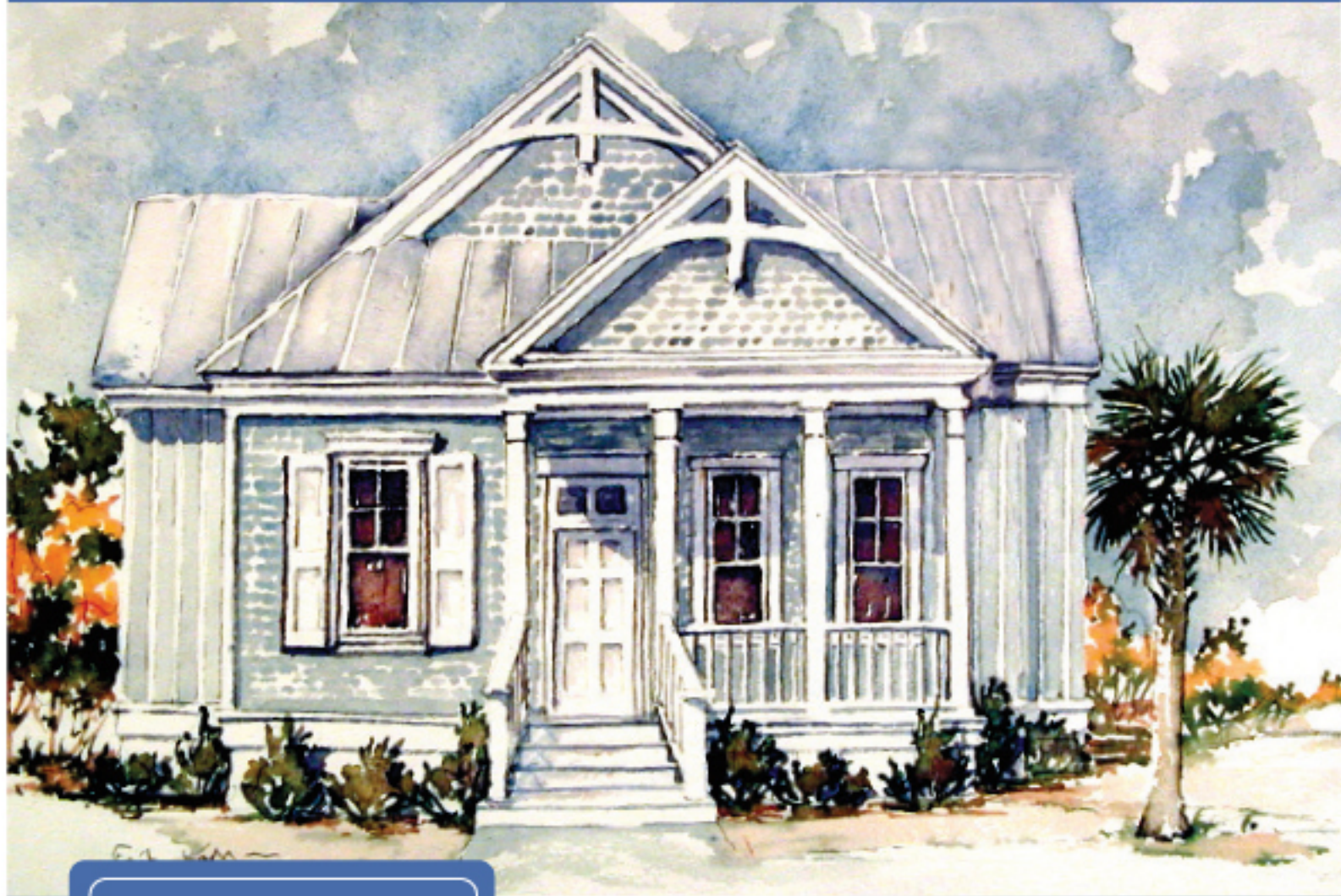


The Myrtle



Offering Price \$397,500

THE COTTAGES at Seagrove

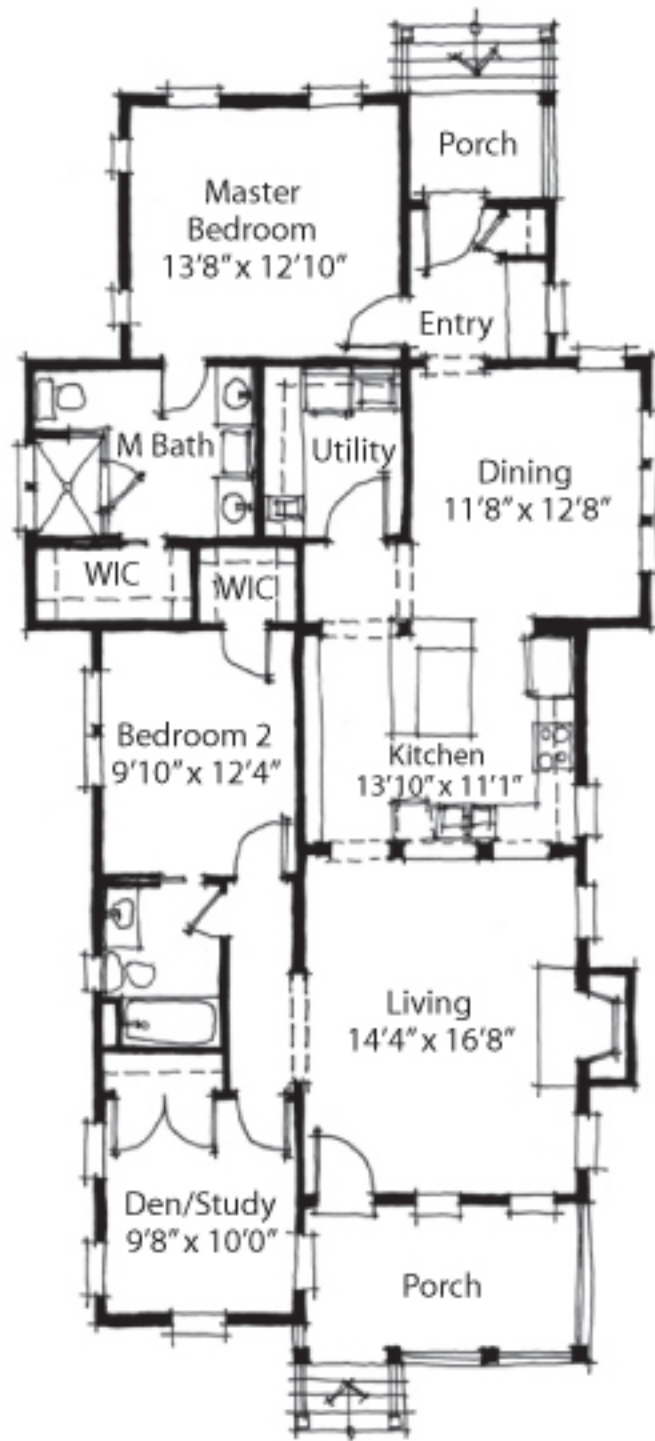
For More Information Call or Email
910.509.7468
Info@SeagroveAtCBeach.com
Visit TheCottagesAtSeagrove.com
IntracoastalNewHomes.com



Enter this exciting new community situated in a maritime forest and feel as though you've been transported back to a time when a cottage by the shore was an attainable dream. We've combined those historic cottage details with cutting edge design at a price that is unbelievable. Community features a clubhouse, pool, nature trails and abundant wildlife...all just a few short blocks to the ocean! And, you can discover, or rediscover, all that Carolina Beach has to offer...exciting new restaurants, shops and night life!



The Myrtle



1850 Square Feet
Includes Attached Garage

Directions: Carolina Beach Road, Hwy 421, to Lake Park Boulevard, right on Dow Road,
left on Ocean Boulevard, left on Spot Lane.

Builder reserves the right to change plans, prices and features without prior notice. 04/15/10

